

KPG

Powerful. High Precision. Reliable

▶ Servo Planetary Gearbox

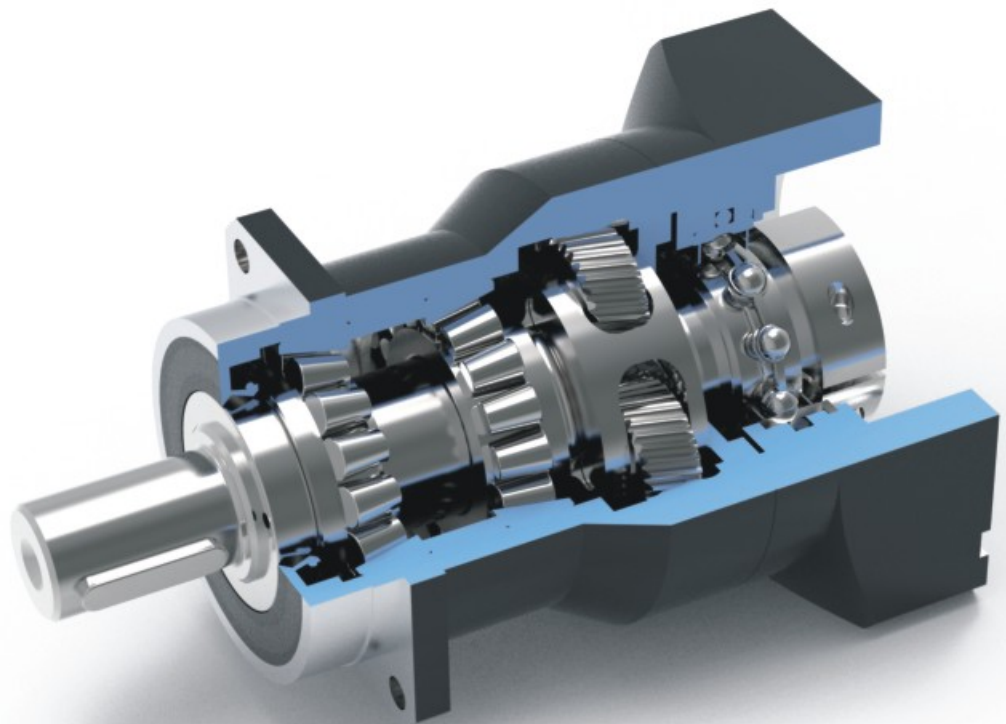
Advanced Gearbox Solution





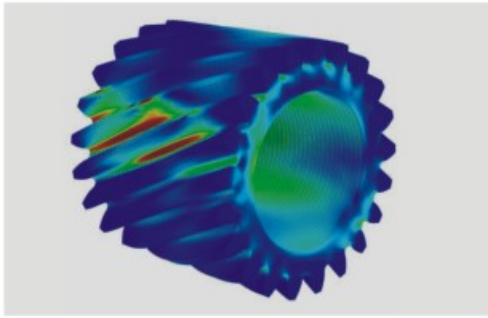
Helical Gear System Technology

Thanks to the tooth to tooth compact ratio more than 60%. The helical gearing and full needle bearing bring the benefits including higher torque capacity, smooth and lower noise running, decreased backlash and higher efficiency. Integrated housing engineering with super skiving gearing tooling craft.



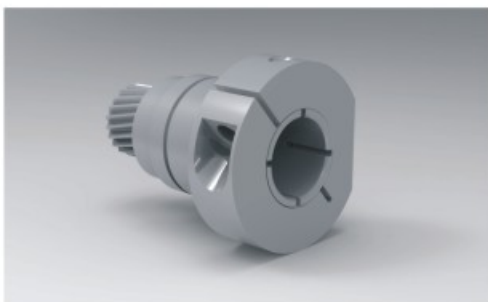
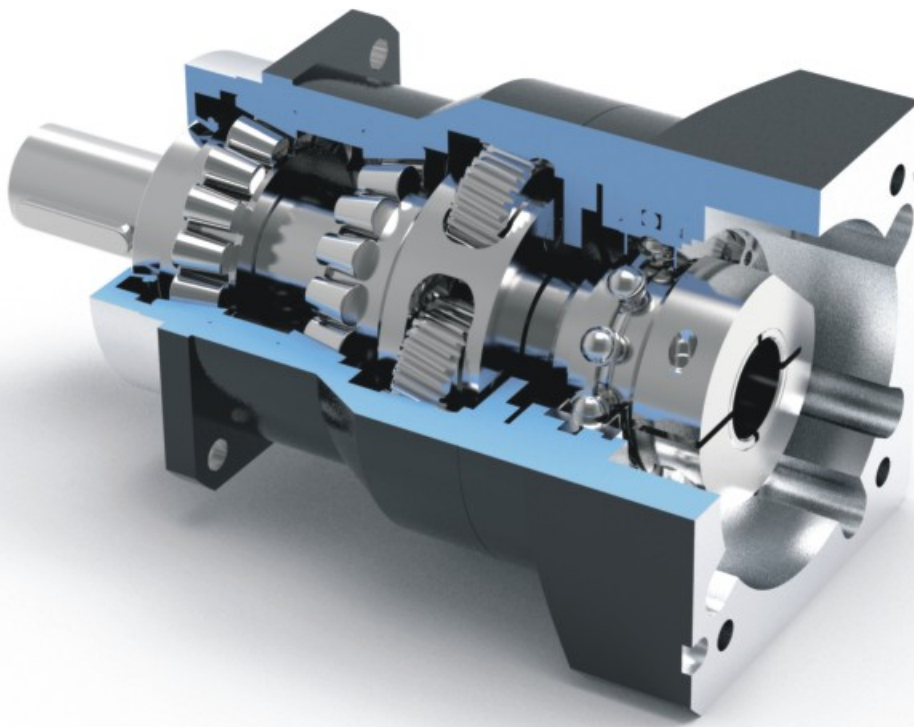
Master CageSpindle Planetary Carrier

The patented Master CageSpindle integrated planetary carrier support planetary gearbox to increase constructional strength running stability and rigidity significantly. Synthetic grease lubrication allows maintenance free for gearbox whole service life.



Super Gear Grinding and Heat Treatment Technology

The global leading gear grinding technology brings the great improvement for the tooth profile optimization, with the high level carburizing and quenching heat treatment technology to reach high precision and gear harden performance.



Dynamic Balance Clamping and Sealing System

For the gearbox input dynamic balance clamping design with perfect concentricity to decrease backlash and increase gearbox operation stability. The ultra sealing system offers grease leakage protection and support gearbox to reach IP65.

KPG Series Servo Planetary Gearbox

Order Instructions

Order Code:

KPG — 120 — 02 — 015 — S1 — P0 — Servo Motor



KPG

Gearbox Series: KPG



120

Gearbox Size



02

Gearbox Stage



015

Gearbox Ratio



S1

S1: Output shaft with key
S2: Output shaft without key



P0

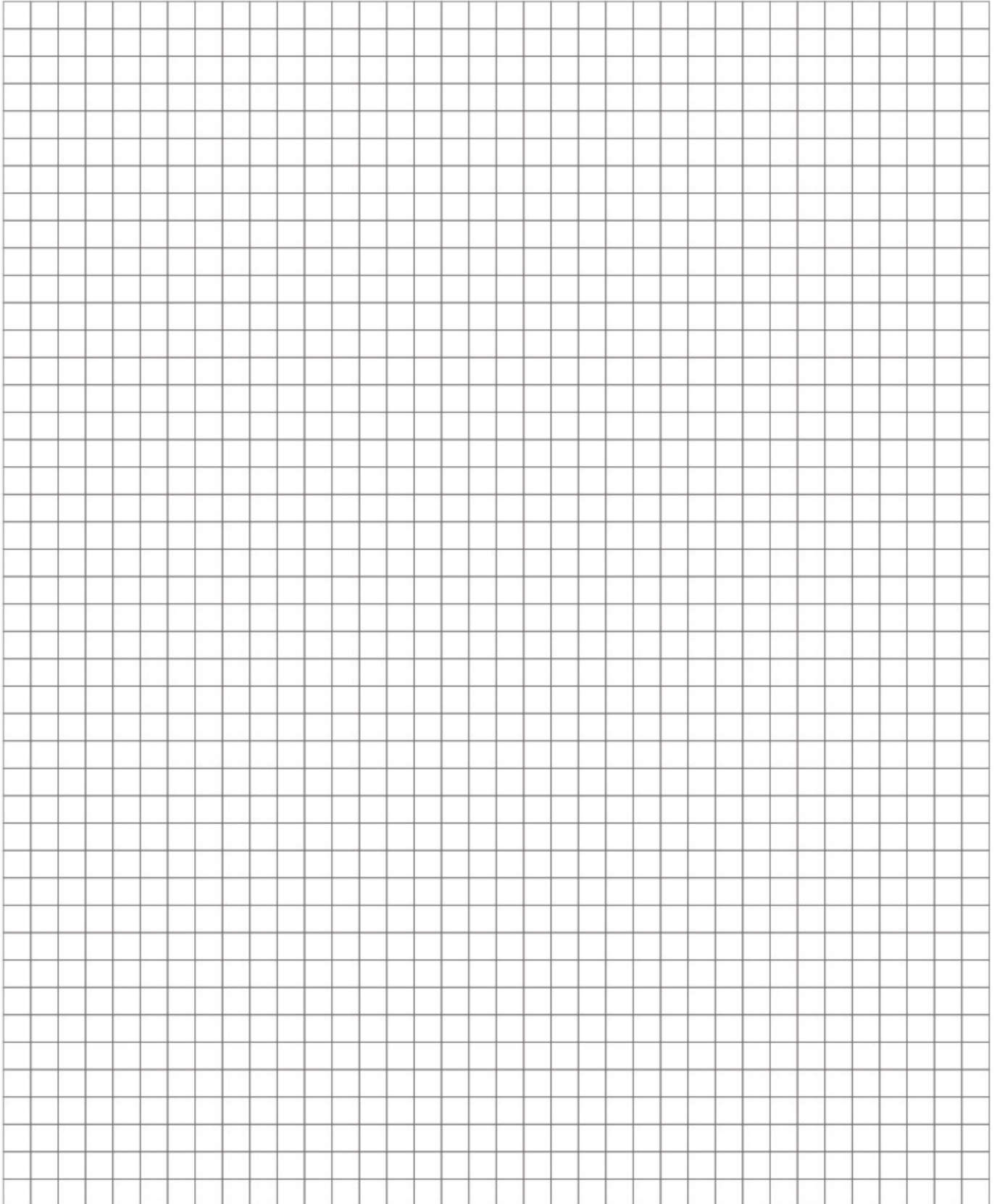
Gearbox Precision



Servo Motor

Motor Manufacturer and model

Technical Memo



KPG070 1-stage

			1-stage							
Ratio	i		3	4	5	6	7	8	9	10
Nominal Output Torque		Nm	46	52	55	50	50	45	42	42
		in.lb	407	460	487	443	443	398	372	372
Emergency Stop Torque	T_{2Max}	Nm	138	156	165	150	150	135	126	126
		in.lb	3603	4073	4308	3917	3917	3525	3290	3290
Maximum Acceleration Torque	T_{2a}	Nm	82.8	93.6	99	90	90	81	75.6	75.6
		in.lb	733	828	876	797	797	717	669	669
Maximum Torque	T_{2a}	Nm	92	104	110	100	100	90	84	84
		in.lb	814	920	974	885	885	797	743	743
Permitted Average Input Speed	n_{1N}	rpm	4000							
Maximum Input Speed	n_{1Max}	rpm	6000							
Mean No Load Running Torque	T_{012}	Nm	0.3	0.27	0.25	0.25	0.25	0.25	0.25	0.25
		in.lb	2.66	2.39	2.21	2.21	2.21	2.21	2.21	2.21
Standard Backlash P1	j_i	arcmin	≤5							
Reduced Low Backlash P0	j_i	arcmin	≤3							
Ultra Low Backlash PU	j_i	arcmin	≤1							
Torsional Rigidity	C_{121}	Nm/arcmin	7							
		in.lb/arcmin	61.95							
Maximum Radial Load	F_{2Max}	N	4300							
		lb _r	967							
Maximum Axial Load	F_{2CMax}	N	3900							
		lb _r	877							
Max. Tilting Moment	M_{2Max}	Nm	227							
		in.lb	2009							
Mass Moment of Inertia	j_i	kgcm ²	0.160	0.140	0.130	0.130	0.130	0.130	0.130	0.130
Operating Noise Level	L_{pk}	dB(A)	< 58							
Efficiency at Full loading	η	%	97							
Operating Temperature		°C	-25 to +90							
		F	-13 to +194							
Lubrication			Synthetic Lubrication Grease							
Mouting Position			Any Directions							
Protection Class			IP 65							
Service lifetime	L_h	h	20,000(Continuous Operation)							
Weight	m	kg	1.6							
		lb _m	3.5							

KPG070 2-stage

		2-stage														
Ratio	i		15	20	25	30	35	40	45	50	60	70	80	90	100	
Nominal Output Torque		Nm	46	52	55	55	55	55	55	55	50	50	45	42	42	
		in.lb	407	460	487	487	487	487	487	487	487	443	443	398	372	372
Emergency Stop Torque	T_{2Max}	Nm	138	156	165	165	165	165	165	165	165	150	150	135	126	126
		in.lb	1221	1381	1460	1460	1460	1460	1460	1460	1460	1328	1328	1195	1115	1115
Maximum Acceleration Torque	T_{2B}	Nm	82.8	93.6	99	99	99	99	99	99	99	90	90	81	75.6	75.6
		in.lb	733	828	876	876	876	876	876	876	876	797	797	717	669	669
Maximum Torque	T_{2a}	Nm	92	104	110	110	110	110	110	110	110	100	100	90	84	84
		in.lb	814	920	974	974	974	974	974	974	974	885	885	797	743	743
Permitted Average Input Speed	n_{1N}	rpm	4000													
Maximum Input Speed	n_{1Max}	rpm	6000													
Mean No Load Running Torque	T_{012}	Nm	0.27	0.27	0.25	0.25	0.25	0.25	0.25	0.25	0.25	0.25	0.25	0.25	0.25	0.25
		in.lb	2.39	2.39	2.21	2.21	2.21	2.21	2.21	2.21	2.21	2.21	2.21	2.21	2.21	2.21
Standard Backlash P1	j_i	arcmin	≤7													
Reduced Low Backlash P0	j_i	arcmin	≤5													
Ultra Low Backlash PU	j_i	arcmin	≤3													
Torsional Rigidity	C_{121}	Nm/arcmin	7													
		in.lb/arcmin	61.95													
Maximum Radial Load	F_{2aMax}	N	4300													
		lb _f	967													
Maximum Axial Load	F_{2GMax}	N	3900													
		lb _f	877													
Max. Tilting Moment	M_{2rMax}	Nm	227													
		in.lb	2009													
Mass Moment of Inertia	j_1	kgcm ²	0.127	0.075	0.064	0.064	0.064	0.064	0.064	0.064	0.064	0.064	0.064	0.075	0.064	0.064
Operating Noise Level	L_{PA}	dB(A)	< 58													
Efficiency at Full loading	η	%	95													
Operating Temperature		°C	-25 to +90													
		F	-13 to +194													
Lubrication			Synthetic Lubrication Grease													
Mouting Position			Any Directions													
Protection Class			IP 65													
Service lifetime	L_{10}	h	20,000(Continuous Operation)													
Weight	m	kg	1.9													
		lb _m	4.2													

KPG Series Servo Planetary Gearbox

KPG090 1-stage

			1-stage							
Ratio	i		3	4	5	6	7	8	9	10
Nominal Output Torque		Nm	125	145	155	145	135	115	105	105
		in.lb	1106	1283	1372	1283	1195	1018	929	929
Emergency Stop Torque	T_{2Max}	Nm	375	435	465	435	405	345	315	315
		in.lb	3319	3850	4116	3850	3585	3053	2788	2788
Maximum Acceleration Torque	T_{2a}	Nm	225	261	279	261	243	207	189	189
		in.lb	1991	2310	2469	2310	2151	1832	1673	1673
Maximum Torque	T_{2a}	Nm	250	290	310	290	270	230	210	210
		in.lb	2213	2567	2744	2567	2390	2036	1859	1859
Permitted Average Input Speed	n_{1N}	rpm	3000							
Maximum Input Speed	n_{1Max}	rpm	6000							
Mean No Load Running Torque	T_{012}	Nm	0.46	0.41	0.39	0.35	0.35	0.35	0.35	0.35
		in.lb	4.07	3.63	3.45	3.10	3.10	3.10	3.10	3.10
Standard Backlash P1	j_s	arcmin	≤5							
Reduced Low Backlash P0	j_s	arcmin	≤3							
Ultra Low Backlash PU	j_s	arcmin	≤1							
Torsional Rigidity	C_{121}	Nm/arcmin	14							
		in.lb/arcmin	123.91							
Maximum Radial Load	F_{2Max}	N	7000							
		lb _r	1574							
Maximum Axial Load	F_{2CMax}	N	6300							
		lb _r	1416							
Max. Tilting Moment	M_{2Max}	Nm	440							
		in.lb	3894							
Mass Moment of Inertia	j_1	kgcm ²	0.61	0.48	0.47	0.47	0.47	0.45	0.44	0.44
Operating Noise Level	L_{pk}	dB(A)	< 60							
Efficiency at Full loading	η	%	97							
Operating Temperature		°C	-25 to +90							
		F	-13 to +194							
Lubrication			Synthetic Lubrication Grease							
Mouting Position			Any Directions							
Protection Class			IP 65							
Service lifetime	L_h	h	20,000(Continuous Operation)							
Weight	m	kg	3.5							
		lb _m	7.3							

KPG090 2-stage

			2-stage													
Ratio	i		15	20	25	30	35	40	45	50	60	70	80	90	100	
Nominal Output Torque		Nm	125	145	155	155	155	155	155	155	145	135	115	105	105	
		in.lb	1106	1283	1372	1372	1372	1372	1372	1372	1372	1283	1195	1018	929	929
Emergency Stop Torque	T_{2Max}	Nm	375	435	465	465	465	465	465	465	435	405	345	315	315	
		in.lb	3319	3850	4116	4116	4116	4116	4116	4116	4116	3850	3585	3053	2788	2788
Maximum Acceleration Torque	T_{2B}	Nm	225	261	279	279	279	279	279	279	261	243	207	189	189	
		in.lb	1991	2310	2469	2469	2469	2469	2469	2469	2469	2310	2151	1832	1673	1673
Maximum Torque	T_{2a}	Nm	250	290	310	310	310	310	310	310	290	270	230	210	210	
		in.lb	2213	2567	2744	2744	2744	2744	2744	2744	2744	2567	2390	2036	1859	1859
Permitted Average Input Speed	n_{1N}	rpm	3000													
Maximum Input Speed	n_{1Max}	rpm	6000													
Mean No Load Running Torque	T_{012}	Nm	0.41	0.41	0.35	0.35	0.35	0.35	0.35	0.35	0.35	0.35	0.35	0.35	0.35	0.35
		in.lb	3.63	3.63	3.10	3.10	3.10	3.10	3.10	3.10	3.10	3.10	3.10	3.10	3.10	3.10
Standard Backlash P1	j_i	arcmin	≤7													
Reduced Low Backlash P0	j_i	arcmin	≤5													
Ultra Low Backlash PU	j_i	arcmin	≤3													
Torsional Rigidity	C_{121}	Nm/arcmin	14													
		in.lb/arcmin	123.91													
Maximum Radial Load	$F_{2RadMax}$	N	7000													
		lb _r	1574													
Maximum Axial Load	F_{2OMax}	N	6300													
		lb _r	1416													
Max. Tilting Moment	$M_{2TiltMax}$	Nm	440													
		in.lb	3894													
Mass Moment of Inertia	j_1	kgcm ²	0.440	0.440	0.390	0.39	0.39	0.390	0.39	0.39	0.39	0.39	0.44	0.44	0.44	
Operating Noise Level	L_{PA}	dB(A)	< 60													
Efficiency at Full loading	η	%	95													
Operating Temperature		°C	-25 to +90													
		F	-13 to +194													
Lubrication			Synthetic Lubrication Grease													
Mouting Position			Any Directions													
Protection Class			IP 65													
Service lifetime	L_{1h}	h	20,000(Continuous Operation)													
Weight	m	kg	3.8													
		lb _m	9.9													

KPG Series Servo Planetary Gearbox

KPG120 1-stage

		1-stage									
Ratio	i		3	4	5	6	7	8	9	10	
Nominal Output Torque		Nm	210	300	320	300	290	255	220	220	
		in.lb	1859	2655	2832	2655	2567	2257	1947	1947	
Emergency Stop Torque	T_{2Max}	Nm	630	900	960	900	870	765	660	660	
		in.lb	5576	7966	8497	7966	7700	6771	5841	5841	
Maximum Acceleration Torque	T_{2a}	Nm	378	540	576	540	522	459	396	396	
		in.lb	3346	4779	5098	4779	4620	4062	3505	3505	
Maximum Torque	T_{2a}	Nm	420	600	640	600	580	510	440	440	
		in.lb	3717	5310	5664	5310	5133	4514	3894	3894	
Permitted Average Input Speed	n_{1N}	rpm	3000								
Maximum Input Speed	n_{1Max}	rpm	6000								
Mean No Load Running Torque	T_{012}	Nm	1.05	0.95	0.91	0.88	0.88	0.88	0.88	0.88	
		in.lb	9.29	8.41	8.05	7.79	7.79	7.79	7.79	7.79	
Standard Backlash P1	j_i	arcmin	≤5								
Reduced Low Backlash P0	j_i	arcmin	≤3								
Ultra Low Backlash PU	j_i	arcmin	≤1								
Torsional Rigidity	C_{121}	Nm/arcmin	26								
		in.lb/arcmin	230.12								
Maximum Radial Load	F_{2Max}	N	10000								
		lb _r	2248								
Maximum Axial Load	F_{2CMax}	N	9000								
		lb _r	2023								
Max. Tilting Moment	M_{2Max}	Nm	843								
		in.lb	7461								
Mass Moment of Inertia	j_i	kgcm ²	3.25	2.74	2.71	2.62	2.62	2.62	2.62	2.57	
Operating Noise Level	L_{pk}	dB(A)	< 63								
Efficiency at Full loading	η	%	97								
Operating Temperature		°C	-25 to +90								
		F	-13 to +194								
Lubrication			Synthetic Lubrication Grease								
Mouting Position			Any Directions								
Protection Class			IP 65								
Service lifetime	L_h	h	20,000(Continuous Operation)								
Weight	m	kg	8.1								
		lb _m	17.8								

KPG120 2-stage

		2-stage														
Ratio	i		15	20	25	30	35	40	45	50	60	70	80	90	100	
Nominal Output Torque		Nm	210	300	320	320	320	320	320	320	300	290	255	220	220	
		in.lb	1859	2655	2832	2832	2832	2832	2832	2832	2832	2655	2567	2257	1947	1947
Emergency Stop Torque	T_{2Max}	Nm	630	900	960	960	960	960	960	960	900	870	765	660	660	
		in.lb	5576	7966	8497	8497	8497	8497	8497	8497	8497	7966	7700	6771	5841	5841
Maximum Acceleration Torque	T_{2B}	Nm	378	540	576	576	576	576	576	576	540	522	459	396	396	
		in.lb	3346	4779	5098	5098	5098	5098	5098	5098	5098	4779	4620	4062	3505	3505
Maximum Torque	T_{2a}	Nm	420	600	640	640	640	640	640	640	600	580	510	440	440	
		in.lb	3717	5310	5664	5664	5664	5664	5664	5664	5664	5310	5133	4514	3894	3894
Permitted Average Input Speed	n_{1N}	rpm	3000													
Maximum Input Speed	n_{1Max}	rpm	6000													
Mean No Load Running Torque	T_{012}	Nm	0.95	0.95	0.88	0.88	0.88	0.88	0.88	0.88	0.88	0.88	0.88	0.88	0.88	0.88
		in.lb	8.41	8.41	7.79	7.79	7.79	7.79	7.79	7.79	7.79	7.79	7.79	7.79	7.79	7.79
Standard Backlash P1	j_i	arcmin	≤7													
Reduced Low Backlash P0	j_i	arcmin	≤5													
Ultra Low Backlash PU	j_i	arcmin	≤3													
Torsional Rigidity	C_{121}	Nm/arcmin	26													
		in.lb/arcmin	230.12													
Maximum Radial Load	F_{2Max}	N	10000													
		lb _r	2248													
Maximum Axial Load	F_{2GMax}	N	9000													
		lb _r	2023													
Max. Tilting Moment	M_{2Max}	Nm	843													
		in.lb	7461													
Mass Moment of Inertia	j_1	kgcm ²	2.580	1.500	1.3	1.3	1.3	1.3	1.3	1.3	1.3	1.49	1.49	1.45	1.45	
Operating Noise Level	L_{PA}	dB(A)	< 63													
Efficiency at Full loading	η	%	95													
Operating Temperature		°C	-25 to +90													
		F	-13 to +194													
Lubrication			Synthetic Lubrication Grease													
Mouting Position			Any Directions													
Protection Class			IP 65													
Service lifetime	L_{10}	h	20,000(Continuous Operation)													
Weight	m	kg	12													
		lb _m	26.4													

KPG Series Servo Planetary Gearbox

KPG160 1-stage

			1-stage							
Ratio	i		3	4	5	6	7	8	9	10
Nominal Output Torque		Nm	350	550	650	610	540	510	440	440
		in.lb	3098	4868	5753	5399	4779	4514	3894	3894
Emergency Stop Torque	T_{2Max}	Nm	1050	1650	1950	1830	1620	1530	1320	1320
		in.lb	9293	14604	17259	16197	14338	13542	11683	11683
Maximum Acceleration Torque	T_{2a}	Nm	630	990	1170	1098	972	918	792	792
		in.lb	5576	8762	10355	9718	8603	8125	7010	7010
Maximum Torque	T_{2a}	Nm	700	1100	1300	1220	1080	1020	880	880
		in.lb	6195	9736	11506	10798	9559	9028	7789	7789
Permitted Average Input Speed	n_{1N}	rpm	3000							
Maximum Input Speed	n_{1Max}	rpm	6000							
Mean No Load Running Torque	T_{012}	Nm	2.6	2.5	2.4	2.4	2.4	2.4	2.4	2.4
		in.lb	23.01	22.13	21.24	21.24	21.24	21.24	21.24	21.24
Standard Backlash P1	j_s	arcmin	≤5							
Reduced Low Backlash P0	j_s	arcmin	≤3							
Ultra Low Backlash PU	j_s	arcmin	≤1							
Torsional Rigidity	C_{121}	Nm/arcmin	52							
		in.lb/arcmin	460.24							
Maximum Radial Load	F_{2Max}	N	19000							
		lb _f	4271							
Maximum Axial Load	F_{2CMax}	N	17000							
		lb _f	3822							
Max. Tilting Moment	M_{2Max}	Nm	2222							
		in.lb	19666							
Mass Moment of Inertia	j_1	kgcm ²	12.31	7.54	7.42	7.25	7.25	7.14	7.14	7.14
Operating Noise Level	L_{pk}	dB(A)	< 65							
Efficiency at Full loading	η	%	97							
Operating Temperature		°C	-25 to +90							
		F	-13 to +194							
Lubrication			Synthetic Lubrication Grease							
Mouting Position			Any Directions							
Protection Class			IP 65							
Service lifetime	L_h	h	20,000(Continuous Operation)							
Weight	m	kg	15.5							
		lb _m	34.1							

KPG160 2-stage

			2-stage												
Ratio	i		15	20	25	30	35	40	45	50	60	70	80	90	100
Nominal Output Torque		Nm	350	550	650	650	650	650	650	650	610	540	510	440	440
		in.lb	3098	4868	5753	5753	5753	5753	5753	5753	5753	5399	4779	4514	3894
Emergency Stop Torque	T_{2Max}	Nm	1050	1650	1950	1950	1950	1950	1950	1950	1830	1620	1530	1320	1320
		in.lb	9293	14604	17259	17259	17259	17259	17259	17259	16197	14338	13542	11683	11683
Maximum Acceleration Torque	T_{2B}	Nm	630	990	1170	1170	1170	1170	1170	1170	1098	972	918	792	792
		in.lb	5576	8762	10355	10355	10355	10355	10355	10355	9718	8603	8125	7010	7010
Maximum Torque	T_{2a}	Nm	700	1100	1300	1300	1300	1300	1300	1300	1220	1080	1020	880	880
		in.lb	6195	9736	11506	11506	11506	11506	11506	11506	11506	10798	9559	9028	7789
Permitted Average Input Speed	n_{1N}	rpm	3000												
Maximum Input Speed	n_{1Max}	rpm	6000												
Mean No Load Running Torque	T_{012}	Nm	2.6	2.6	2.5	2.5	2.5	2.5	2.5	2.5	2.5	2.5	2.5	2.5	2.5
		in.lb	23.01	23.01	22.13	22.13	22.13	22.13	22.13	22.13	22.13	22.13	22.13	22.13	22.13
Standard Backlash P1	j_i	arcmin	≤7												
Reduced Low Backlash P0	j_i	arcmin	≤5												
Ultra Low Backlash PU	j_i	arcmin	≤3												
Torsional Rigidity	C_{121}	Nm/arcmin	52												
		in.lb/arcmin	460.24												
Maximum Radial Load	$F_{2RadMax}$	N	19000												
		lb _r	4271												
Maximum Axial Load	F_{20Max}	N	17000												
		lb _r	3822												
Max. Tilting Moment	M_{20Max}	Nm	2222												
		in.lb	19666												
Mass Moment of Inertia	j_1	kgcm ²	12.350	6.650	4.08	4.08	4.08	5.360	4.08	5.36	4.08	4.08	7.4	7.3	7.3
Operating Noise Level	L_{PA}	dB(A)	< 65												
Efficiency at Full loading	η	%	95												
Operating Temperature		°C	-25 to +90												
		F	-13 to +194												
Lubrication			Synthetic Lubrication Grease												
Mouting Position			Any Directions												
Protection Class			IP 65												
Service lifetime	L_{1h}	h	20,000(Continuous Operation)												
Weight	m	kg	28												
		lb _m	61.6												

KPG Series Servo Planetary Gearbox

KPG205 1-stage

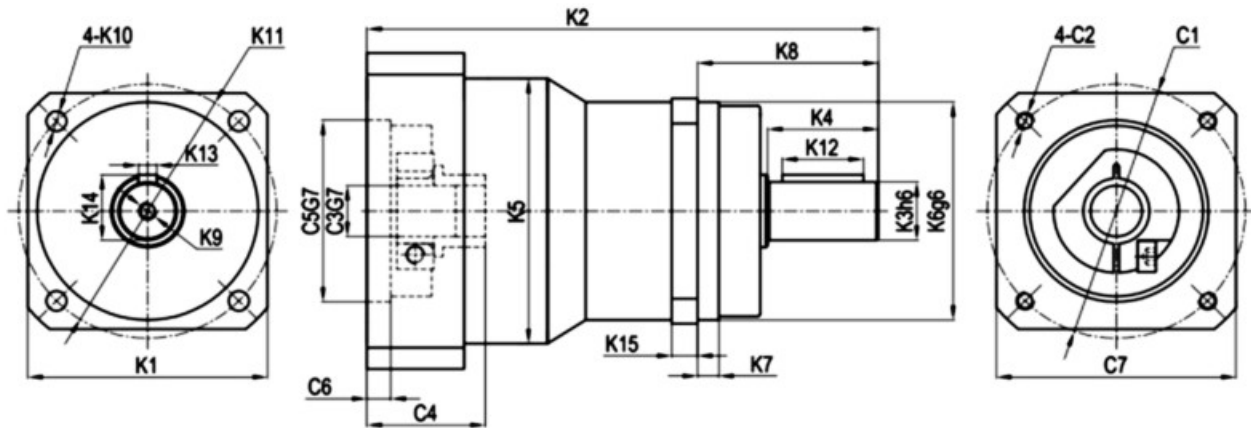
			1-stage							
Ratio	i		3	4	5	6	7	8	9	10
Nominal Output Torque		Nm	1250	1200	1000	1000	1000	1000	910	910
		in.lb	11063	10621	8851	8851	8851	8851	8054	8054
Emergency Stop Torque	T_{2Max}	Nm	3750	3600	3000	3000	3000	3000	2730	2730
		in.lb	33190	31863	26552	26552	26552	26552	24162	24162
Maximum Acceleration Torque	T_{2a}	Nm	2250	2160	1800	1800	1800	1800	1638	1638
		in.lb	19914	19118	15931	15931	15931	15931	14497	14497
Maximum Torque	T_{2a}	Nm	2500	2400	2000	2000	2000	2000	1820	1820
		in.lb	22127	21242	17701	17701	17701	17701	16108	16108
Permitted Average Input Speed	n_{1N}	rpm	2500							
Maximum Input Speed	n_{1Max}	rpm	4000							
Mean No Load Running Torque	T_{012}	Nm	3.5	3.4	3.2	3.2	3.2	3.2	3.2	3.2
		in.lb	30.98	30.09	28.32	28.32	28.32	28.32	28.32	28.32
Standard Backlash P1	j_s	arcmin	≤ 5							
Reduced Low Backlash P0	j_s	arcmin	≤ 3							
Ultra Low Backlash PU	j_s	arcmin	≤ 1							
Torsional Rigidity	C_{121}	Nm/arcmin	138							
		in.lb/arcmin	1221.40							
Maximum Radial Load	F_{2Max}	N	24000							
		lb _r	5395							
Maximum Axial Load	F_{2CMax}	N	22000							
		lb _r	4946							
Max. Tilting Moment	M_{2Max}	Nm	2907							
		in.lb	25729							
Mass Moment of Inertia	j_1	kgcm ²	28.98	23.67	22.75	22.48	22.48	22.59	22.59	22.55
Operating Noise Level	L_{pk}	dB(A)	< 67							
Efficiency at Full loading	η	%	97							
Operating Temperature		°C	-25 to +90							
		F	-13 to +194							
Lubrication			Synthetic Lubrication Grease							
Mouting Position			Any Directions							
Protection Class			IP 65							
Service lifetime	L_h	h	20,000(Continuous Operation)							
Weight	m	kg	39							
		lb _m	85.8							

KPG205 2-stage

			2-stage													
Ratio	i		15	20	25	30	35	40	45	50	60	70	80	90	100	
Nominal Output Torque		Nm	1250	1200	1000	1000	1000	1000	1000	1000	1000	1000	1000	910	910	
		in.lb	11063	10621	8851	8851	8851	8851	8851	8851	8851	8851	8851	8851	8054	8054
Emergency Stop Torque	T_{2Max}	Nm	3750	3600	3000	3000	3000	3000	3000	3000	3000	3000	3000	3000	2730	2730
		in.lb	33190	31863	26552	26552	26552	26552	26552	26552	26552	26552	26552	26552	24162	24162
Maximum Acceleration Torque	T_{2B}	Nm	2250	2160	1800	1800	1800	1800	1800	1800	1800	1800	1800	1800	1638	1638
		in.lb	19914	19118	15931	15931	15931	15931	15931	15931	15931	15931	15931	15931	14497	14497
Maximum Torque	T_{2a}	Nm	2500	2400	2000	2000	2000	2000	2000	2000	2000	2000	2000	2000	1820	1820
		in.lb	22127	21242	17701	17701	17701	17701	17701	17701	17701	17701	17701	17701	16108	16108
Permitted Average Input Speed	n_{1N}	rpm	2500													
Maximum Input Speed	n_{1Max}	rpm	4000													
Mean No Load Running Torque	T_{012}	Nm	2.5	2.5	2.4	2.4	2.4	2.4	2.4	2.4	2.4	2.4	2.4	2.4	2.4	2.4
		in.lb	22.13	22.13	21.24	21.24	21.24	21.24	21.24	21.24	21.24	21.24	21.24	21.24	21.24	21.24
Standard Backlash P1	j_i	arcmin	≤7													
Reduced Low Backlash P0	j_i	arcmin	≤5													
Ultra Low Backlash PU	j_i	arcmin	≤3													
Torsional Rigidity	C_{121}	Nm/arcmin	138													
		in.lb/arcmin	1221.40													
Maximum Radial Load	$F_{2RadMax}$	N	24000													
		lb _f	5395													
Maximum Axial Load	F_{20Max}	N	22000													
		lb _f	4946													
Max. Tilting Moment	$M_{2TilMax}$	Nm	2907													
		in.lb	25729													
Mass Moment of Inertia	j_1	kgcm ²	12.350	7.420	7.14	7.14	7.14	7.140	7.14	7.14	7.14	7.14	7.54	7.42	7.42	
Operating Noise Level	L_{PA}	dB(A)	< 67													
Efficiency at Full loading	η	%	95													
Operating Temperature		°C	-25 to +90													
		F	-13 to +194													
Lubrication			Synthetic Lubrication Grease													
Mouting Position			Any Directions													
Protection Class			IP 65													
Service lifetime	L_h	h	20,000(Continuous Operation)													
Weight	m	kg	40													
		lb _m	88													

KPG Series Servo Planetary Gearbox

KPG Dimensions



Model	KPG070		KPG090		KPG120		KPG160		KPG205	
Stage	1	2	1	2	1	2	1	2	1	2
K1	62		75		100		140		180	
	2.441		2.953		3.937		5.512		7.087	
K2	155	161	195	229	240	261	295	310	315.5	360
	6.102	6.339	7.677	9.016	9.449	10.276	11.614	12.205	12.421	14.173
K3	16		22		32		40		55	
	0.630		0.866		1.260		1.575		2.165	
K4	28		36		58		82		82	
	1.102		1.417		2.283		3.228		3.228	
K5	70		90		120		160		205	
	2.756		3.543		4.724		6.299		8.071	
K6	60		70		90		130		160	
	2.362		2.756		3.543		5.118		6.299	
K7	5		6		8		10		12	
	0.197		0.236		0.315		0.394		0.472	
K8	48		56		88		112		112	
	1.890		2.205		3.465		4.409		4.409	
K9	M5X12		M6X16		M10X22		M12X25		M20X40	
K10	5.5		7		9		11		13	
	0.217		0.256		0.354		0.433		0.512	
K11	68		85		120		165		215	
	2.677		3.346		4.724		6.496		8.465	
K12	25		32		50		65		65	
	0.984		1.260		1.969		2.559		2.559	
K13	5		6		10		12		16	
	0.197		0.236		0.394		0.472		0.630	
K14	18		24.5		35		43		59	
	0.709		0.965		1.378		1.693		2.323	
K15	6		7		10		12		15	
	0.236		0.276		0.394		0.472		0.591	
C1	90	70	145	90	145	90	200	145	215	200
	3.543	2.756	5.709	3.543	5.709	3.543	7.874	5.709	8.465	7.874
C2	M6X15	M5X12	M8X20	M6X15	M8X20	M6X15	M12X25	M8X20	M12X25	M12X25
C3	19	14	24	19	24	19	35	24	42	35
	0.748	0.551	0.945	0.748	0.945	0.748	1.378	0.945	1.654	1.378
C4	41.6	32.1	61.3	41.6	61.3	41.6	82	61.3	82	82
	1.638	1.264	2.413	1.638	2.413	1.638	3.228	2.413	3.228	3.228
C5	70	50	110	70	110	70	114.3	110	180	114.3
	2.756	1.969	4.331	2.756	4.331	2.756	4.500	4.331	7.087	4.500
C6	6.5	6.5	8	6.5	8	6.5	8	8	8	8
	0.256	0.256	0.315	0.256	0.315	0.256	0.315	0.315	0.315	0.315
C7	80	70	120	89	120	89	175	120	190	175
	3.150	2.756	4.724	3.504	4.724	3.504	6.890	4.724	7.480	6.890

The dimensions modified as per the applied motor flanges.

You can get the specific gearbox drawing solution by KDP(Kofon Design Programme) on line from our website: www.kofon-motion.com

Technical Memo

